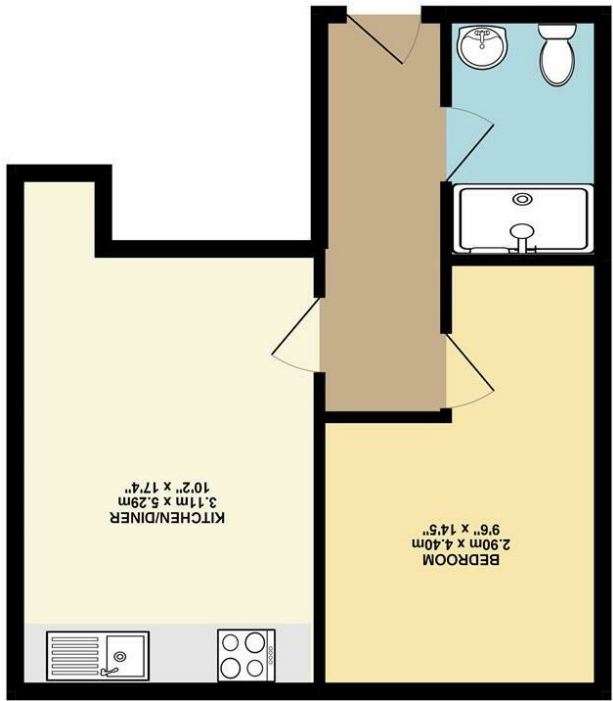


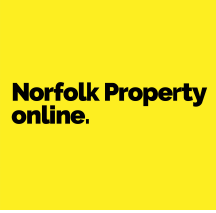
Whilst every attempt has been made to ensure the accuracy of the constant contained herein, measurements of work and dimensions are approximate and should be used as a guide only. The company gives no warranty or representation in relation to the accuracy of the measurements. The company is not responsible for any loss or damage caused by the use of the information contained herein. The company is not responsible for any loss or damage caused by the use of the information contained herein. The company is not responsible for any loss or damage caused by the use of the information contained herein.



GROUND FLOOR 34.72 sq. m. (373.69 sq. ft.)

Energy Efficiency Rating	
Potential	Current
England & Wales EU Directive 2002/91/EC Not energy efficient - higher running costs	
(1-20) <b>G</b>	
(21-30) <b>F</b>	
(31-40) <b>E</b>	
(41-50) <b>D</b>	
(51-60) <b>C</b>	
(61-70) <b>B</b>	
(71-80) <b>A</b>	
(81-91) <b>A</b>	
(92 plus) <b>A</b>	
Very energy efficient - lower running costs	

Disclaimer - In accordance with the Property Misdescriptions Act, the company gives notice that all descriptions, references to condition, necessary permissions for use and other details are given in good faith and believed to be correct, but any intending lessees do not rely on them as statements of fact, but must satisfy themselves by inspection or other means, as to their accuracy.



Bethel Street | Norwich | NR2  
**Guide price £170,000**

Norfolk Property Online presents this stunning one bedroom, top floor apartment.

Uniquely positioned within Norwich's urban epicentre, the Aldwych House development entitles its residents to be within walking distance of Norwich's nationally acclaimed shopping facilities, quirky cafes, delectable restaurants, lively nightlife and its quintessential, historic core.

Aldwych House presents four floors of luxury apartments including a quirky basement level with some apartments on this level featuring outside space. A generous selection of one and two bedroom apartments have been expertly constructed to exploit modern comforts. High specification fittings and polished interiors have intensified the contemporary character of the development. Idyllic views over the city skyline and some of Norwich's most beloved, cultural landmarks are granted from the second floor.

Aldwych House is flawlessly presented and has been concisely finished to a high degree of specification. The residence suits city dwellers who crave contemporary accommodation in the municipal city centre. Proximity to both Norwich's bus and train stations caters perfectly for professional commuters.

